



## What's New in Preactor v11.2

Installed by more than 3,500 companies in 67 countries around the world.

### 5 IMPORTANT FACTS ABOUT V11.2

Preactor v11.1 and 11.2 offer a number of new features and functions that further enhances your Preactor system.

#### 1 | LICENSING SYSTEM

The new licensing system provides a much better user experience in terms of activation and support.

#### 2 | PLATFORM SUPPORT

Preactor can now run on any current version of Windows, in 32 or 64 bit without requiring a hardware license key and works well in any virtualization platform.

#### 3 | PERFORMANCE

Preactor now works much faster than before especially noticeable with large data sets and complex scheduling rules.

#### 4 | CAPACITY LOAD

Preactor now offers features to calculate the resource and resource group loading and display the results in a series of interactive reports.

#### 5 | WEIGHTED PRIORITY

You can now set priority by weighting a number of order attributes using a slider tool.

There have been a number of changes and improvements in Preactor covering version 11.1, released in 2011 and 11.2, released in 2012 which will have an impact on every Preactor user.

### NEW LICENSING SYSTEM

From version 11.1 onwards we will be using a completely new licensing system that replaces the previous copy control and hardware key options. The new licensing system allows us to

- Have a 30 day trial period built in
- On-line, wizard based activation of licenses
- Built in automatic processes for repair and return of licenses
- Process for users that provides a 30 day changeover from old license to new license system

### IMPROVED PLATFORM SUPPORT

The introduction of the new licensing system means that we can support all current versions of Windows including XP, Vista, 7, 2003, 2008, and 2008 R2. We can also support 32 or 64 bit operating systems and reliably use any virtualisation platform.

### IMPROVED PERFORMANCE

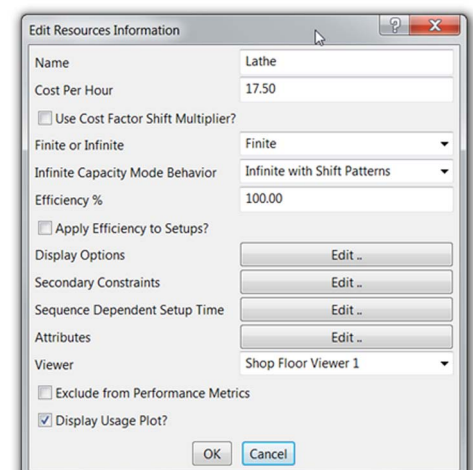
Preactor 11.1 introduced some marked improvement with scheduling large data sets. The degree of improvement will be very much dependent on the version and configuration you use but in some tests with Preactor APS 400 using complex sequencing rules and materials pegging the time to schedule has been reduced by up to 10 times. We are continuing to work on additional speed improvements and these will be made available in future releases.

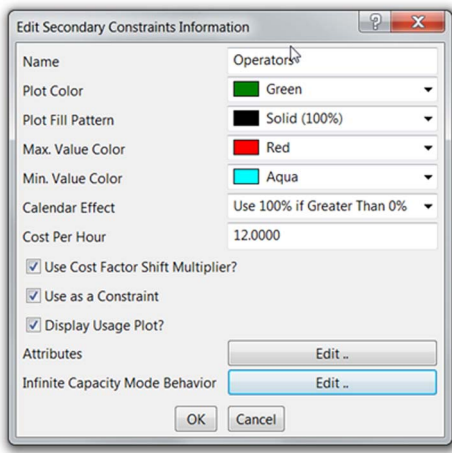
### CAPACITY LOAD

In Preactor 11.2 you have the ability to switch both primary and secondary resources into infinite mode. This can be very useful in assessing capacity requirements. A new 'Infinite Capacity Mode' is available within the sequencer.

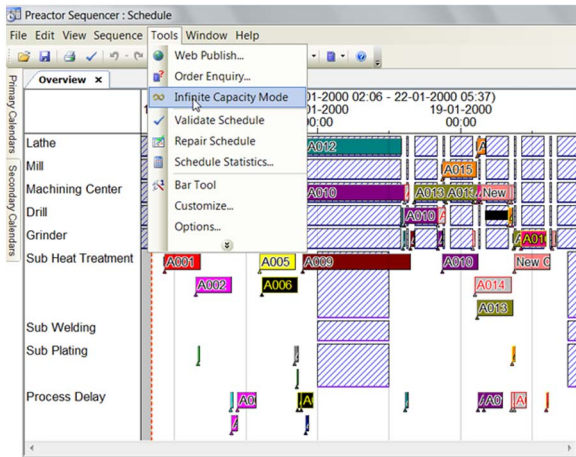
You can also choose the behaviour for each resource when switched. For example the switch could change the behaviour of a resource from Finite capacity to Infinite capacity with Shift Patterns.

Similarly in the Preactor 300 FCS version you can switch a secondary resource from Finite to Infinite.

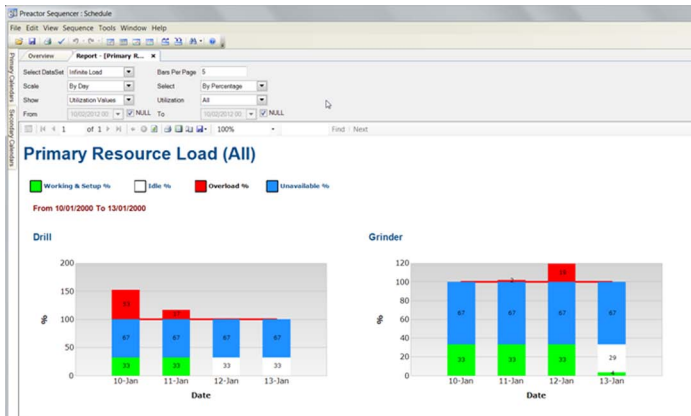




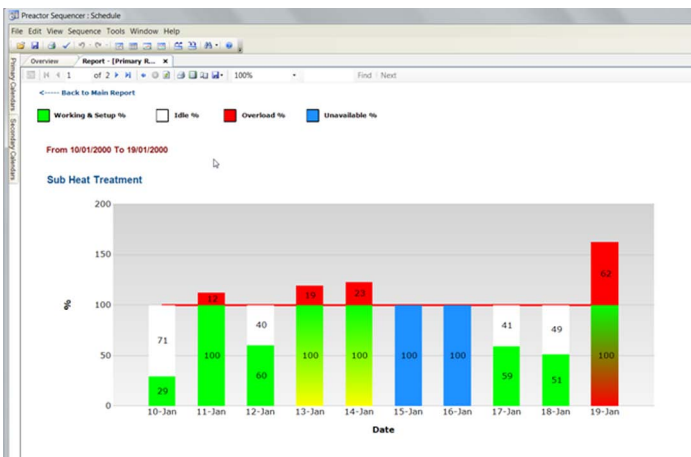
When the 'Infinite Capacity Mode' option is selected the primary and secondary resources are set to the defined behaviour.



When activated a new schedule can be generated and a new set of reports have been created to show the loading of resources and resource groups.



When opening a report you will get an overview of the loading of resources in the form of bar charts.

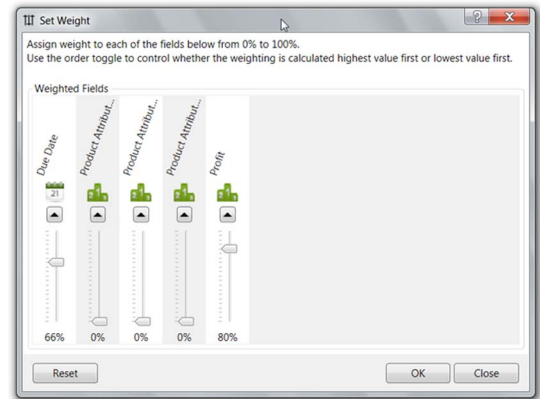


Clicking on an individual bar chart for a specific resource or resource group will provide additional detail and from here you can click on an individual bar to get a table of operations that contribute to the resource load.

Order No.	Product	Part No.	Qty.	Op. No.	Operation Name	Start Time	End Time	Due Date	Op. Progress
A020	Gear	234-GH	19	40	Harden	18/01/2000 11:44	18/01/2000 11:44	21/01/2000	Not Started
A024	Gear	234-GH	12	40	Harden	18/01/2000 09:48	20/01/2000 09:48	24/01/2000	Not Started
A013	Spindle	1-HFG	16	40	Harden Spindle	18/01/2000 11:15	20/01/2000 11:15	21/01/2000	Not Started

## WEIGHTED PRIORITY TOOL

The new Weighted Priority tool will work with Preactor 200 FCS and upwards and provides an easy way to combine a number of order attributes, for examples Due Date, Quantity, Product Attributes etc to determine the overall priority of an order and hence the sequence in which it is added to a schedule.



Each attribute is given a weighting between 0 and 100 using a convenient slider interface and Preactor calculates the priority to be used during the scheduling run which can be forward, backward or bi-directional.

The user can customize the attributes that appear in the slider by editing the Preactor PRTF file.

## CONTACT DETAILS

Preactor International Ltd  
 Cornbrash Park  
 Bumpers Way  
 Chippenham  
 Wiltshire  
 United Kingdom  
 SN14 6RA

Tel: +44 (0) 1249 650316  
 Web: [www.preactor.com](http://www.preactor.com)  
 Email: [sales@preactor.com](mailto:sales@preactor.com)

*Preactor is a registered trademark of Preactor International Limited. Microsoft is a registered trademark of the Microsoft Corporation.*

